

# 36th International Vegetable Training Courses. « Module1: From seed to Harvest »



# GREEN HOUSE AND INTEGRATED PEST MANAGEMENT(IPM)

**SAMPO TOUSSAINT**

**General Direction of Plants Productions / Ministry of  
Agriculture and the Hydraulic Managements**

**Tel: +226 70 63 48 59**

**Email: tresomalgde@yahoo,fr**

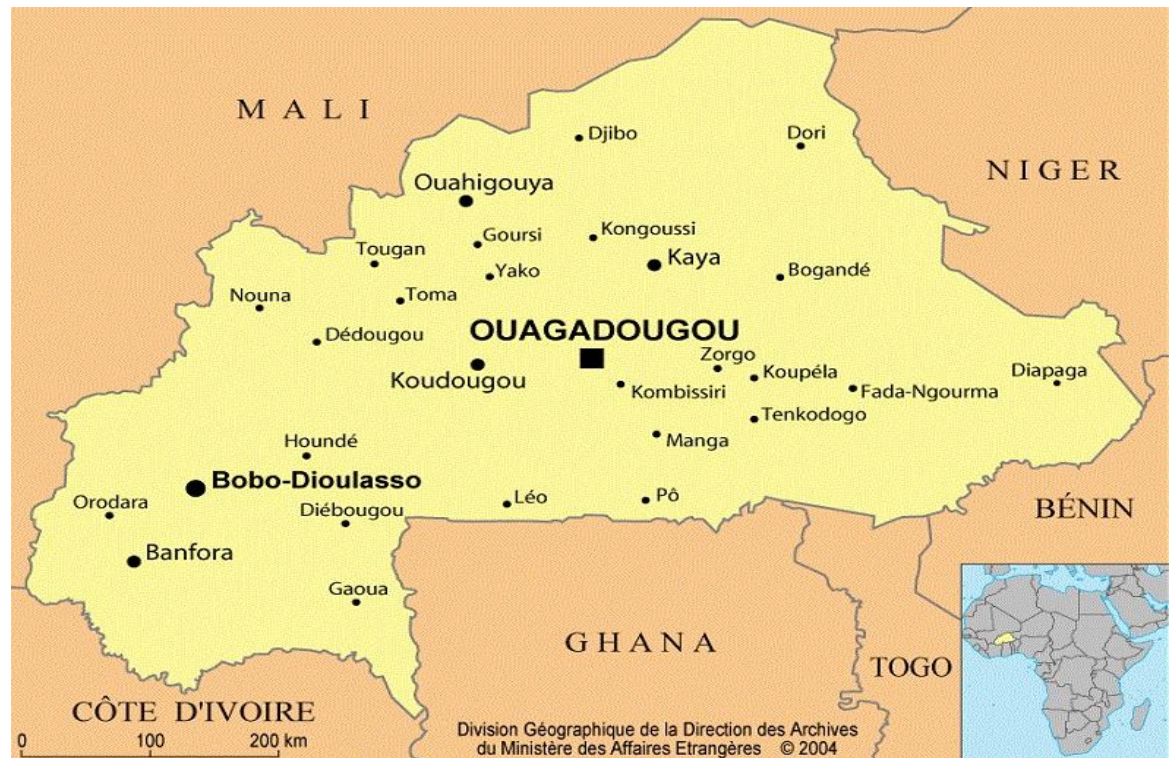


**World Vegetable Center**



Burkina from  
Mòoré means ‘men  
of integrity’, while  
Faso in Dioula  
means ‘fatherland’.  
Thus the  
Burkina Faso is  
‘the land of upright  
people’ or ‘the land  
of honest people’.

## Location of Burkina Faso







# Country Background

- Area , T: 274 200Km<sup>2</sup>, water(%): 0.146; reservoir capacity≈ 5km<sup>3</sup>
- Topography:
  - peneplain : about 80% with a gentle
  - sandstone plateaux (in south) slope about 5%
- Climate
  - Dry tropical climate under the seasonal alternation
  - of moist air from the monsoon coming from
  - oceanic high pressure and dry air from the
  - Sahelian latitudes.



# Country Background

## ➤ Climate

- Rainfall curve is unimodal : a rainy season from
- June to October and a dry season.
- Rainfall generally tending to diminish with :
  - ✦ 400 mm average in the north
  - ✦ 900 mm average in the south
- Annual minimum monthly temperature is  $> 18^{\circ}\text{C}$
- with an increasing aridity from south to north



# Country Background

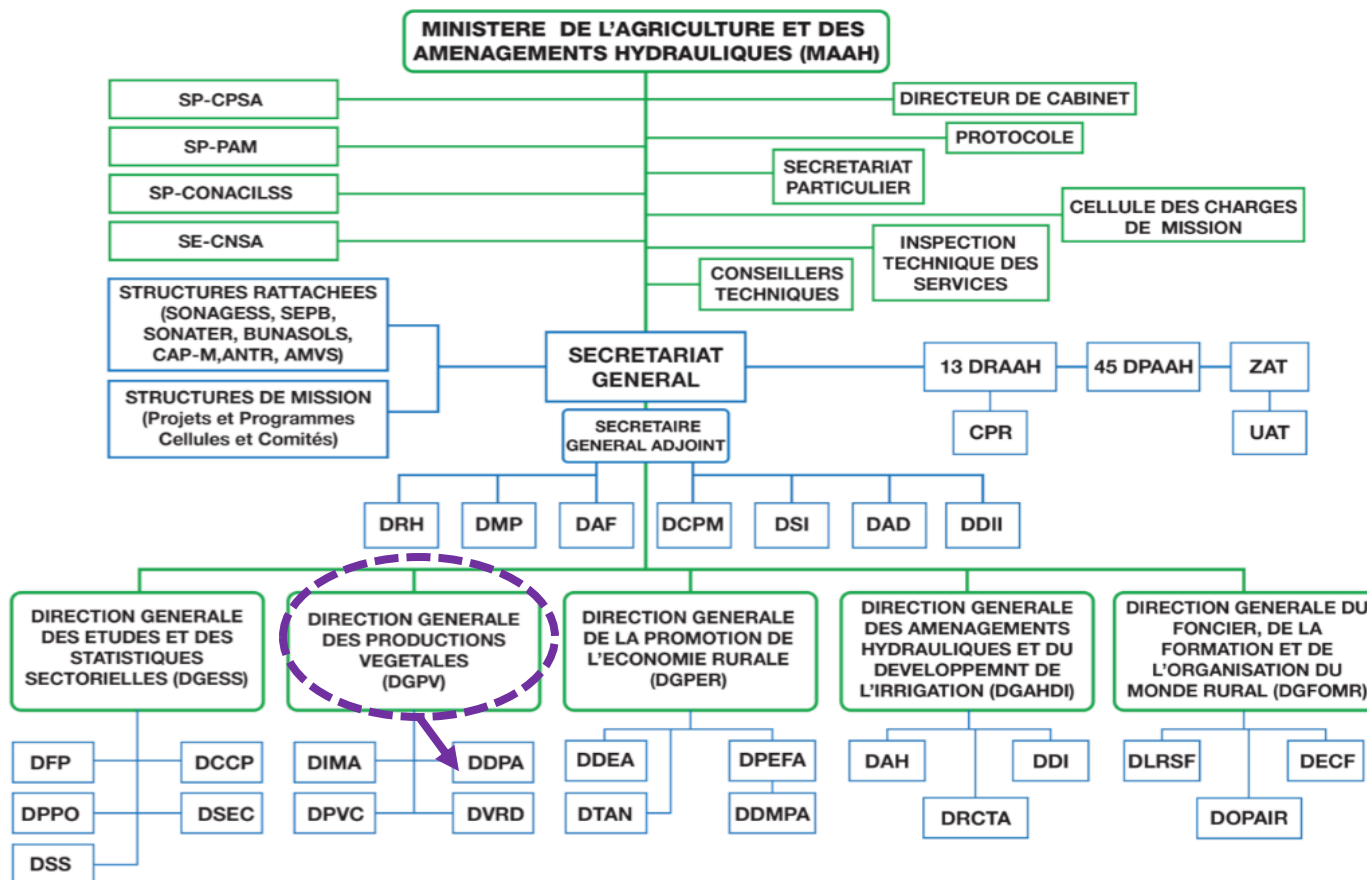
## ➤ Population:

- 2016 estimate: 18,634,000 inhabitants
- Density: 68.1/km<sup>2</sup> (estimate in 2016)
- Pop. Growth rate (average annual %): 2.9
- Total Fertility Rate : 5.7
- Life expectancy at birth (females/males): 59.3/56.7 years
- Ethn: Moosé, Mandé, Pheuls, Goulmatché,....
- Occupation: Agriculture 80%
- Language: Franch, Mooré, Dioula

## ➤ Administrative divisions: 13 Régions, 45 Provinces, 352 Counties,



# Organization of the MAAH





# Characteristics of Burkina agriculture

- Cultivated area (2015): 5 318 115 Ha
- Crops
  - ✦ Rainy season(RS)
    - Cereals: Millet, Sorghum, Maize, Rice
    - Trading crops : Cotton, Sesame, Soybean, groundnut





# Characteristics of Burkina agriculture

- ✦ Dry season(DS)
  - Vegetable: Tomato, Onion, Eggplant, Potato, Cabbage, Cucumber, Amaranth, ...



# Development Action Plan

## QUESTIONS

What are the problems? → Diagnosis of the situation

What to do? → Technologies

How to do it? → Application of the technologies

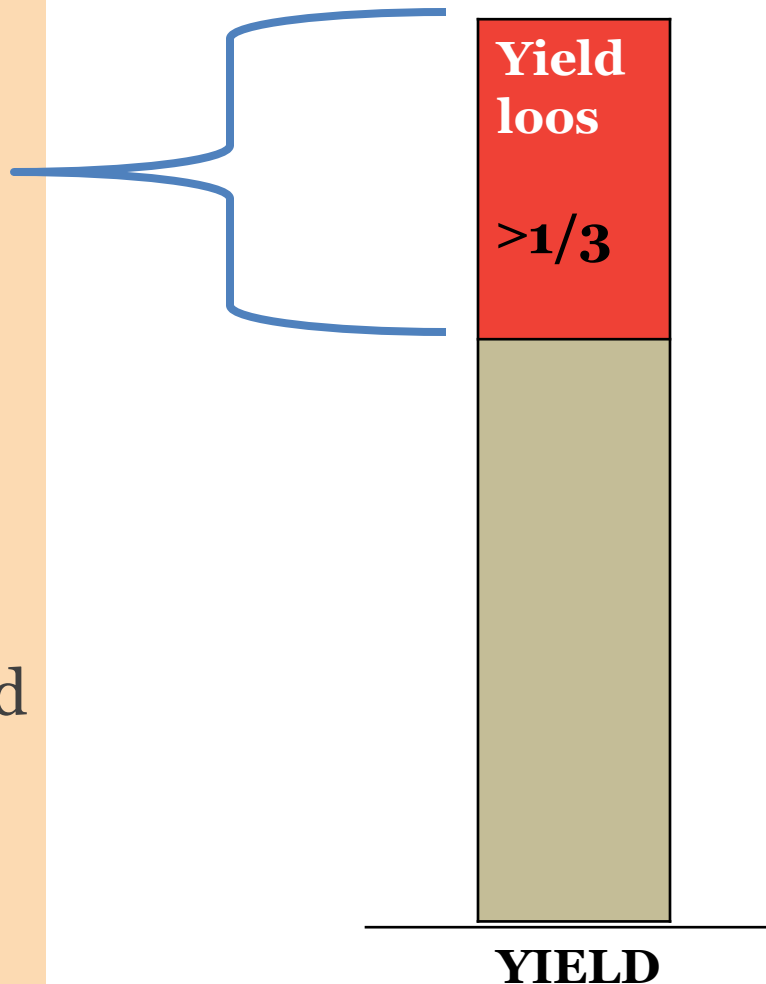
With WHO? → Actors: Beneficiaries, accompanist  
( Government, ONG, Bank,...)



# What are the problems?

## Vegetable crop difficulties in Burkina Faso

- Water
- Pests, diseases
- Equipment, seeds, fertilizers and pesticides
- Practices





## What to do? 1. Greenhouse

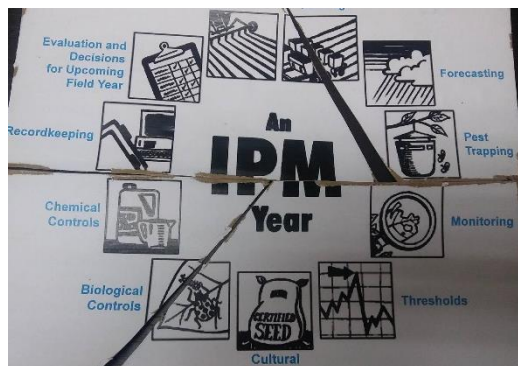
- Nutritional greenhouse essay for 10 District(Town) of Burkina
- Grow local and exotic vegetables







## What to do? 2. Integrated Pest Management including grafting





## How to do it? Nutritional greenhouse & GAP

- To train the producers
- To develop the technologies as the hydroponic, IPM,
- Produce and sale of vegetable
- To achieve of visits commented on the yard.





## With who?: Partners

Actors	Responsibilities
Government	Reservoirs construction and irrigate field management Producers training Technical assistant accompaniment Subsidize equipment for farmers
ONG/Banks	Technical assistant accompaniment  Financing the producers
Producers	Producers organization Produce et sell vegetable
traders/ consumers	Varieties choice, shopping, transformation , exportation et consumption of vegetable crops



# Planning 2018

Activities	Budget (\$US)		Périod of realization												Location	Responsible
			Jan	Fb	Marc h	April	May	Jun	Jul	Aug	Sept	Oct	Nov	Dec		
Restitution to the Agriculture and Hydraulique Management Minister													XX			
creation of Local garden: acquisition of seed, fertilizers, material and pesticide	600	65												XX	In 39 Conties du Burkina	DDPA/PDCFL
Creation of green house: Erection of greenhouse and all factors of production and working of the greenhouse	200 080		XX												In 10 Districts/Provinc es	DDPA/PDCFL
Agents of agriculture training	770	19		XX											Koudougou	DDPA/PDCFL
Producers training	240	24			XX										Koudougou and Manga	DDPA/PDCFL
Technical assistant accompaniment for the producers	000	20	XX	XX	XX	XX	XX	XX			XX	XX	XX	XX		DDPA/PDCFL
Expounded days	000	20	XX	XX	XX	XX	XX	XX			XX	XX	XX	XX		DDPA/PDCFL



THANK YOU  
KOP KUN KRUP

