

Report for Disease Samples

Fen Beed

Regional Director for East and Southeast Asia and Oceania



**22nd September,
35th IVTC
Module 1**



Collecting information

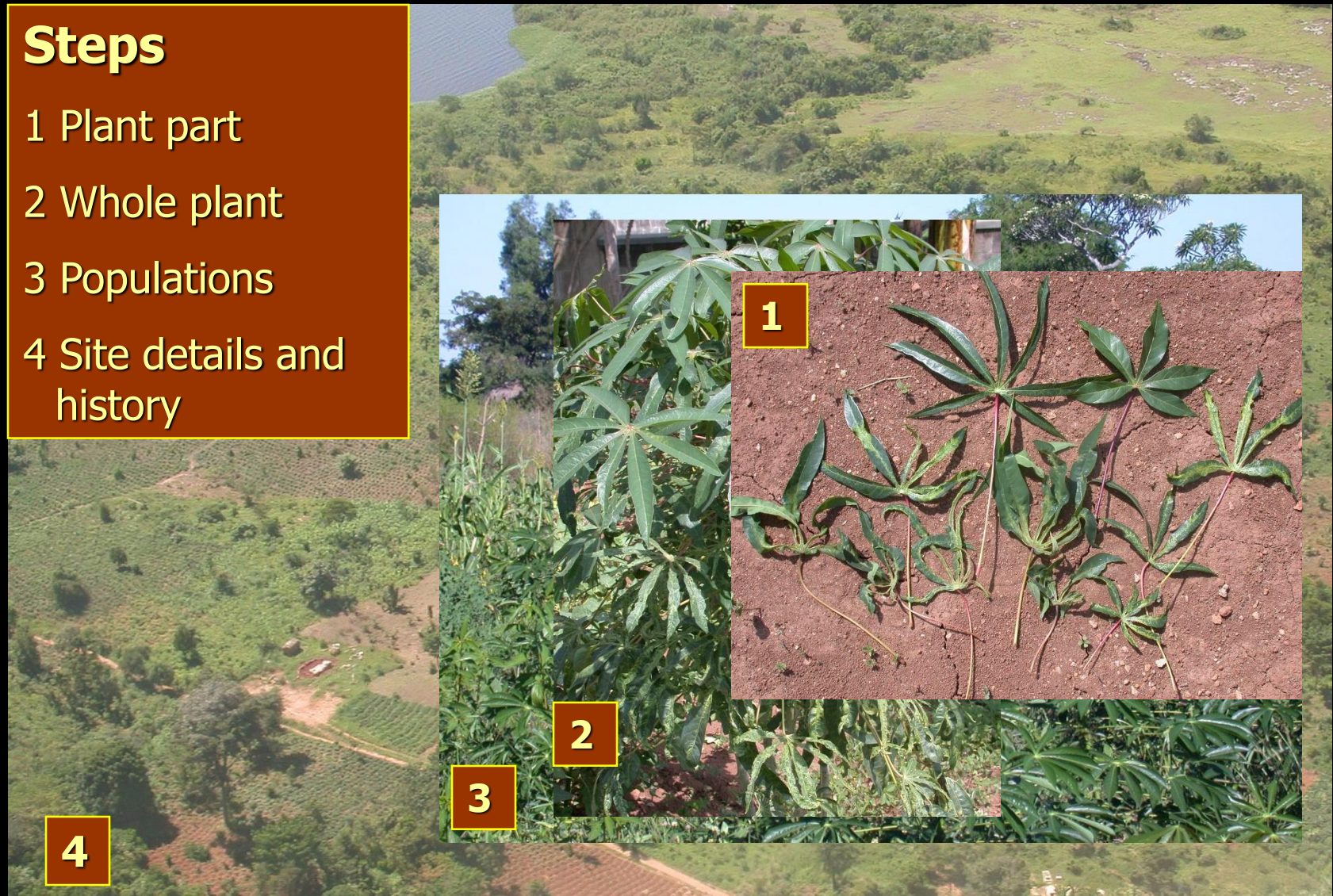
1. Types of symptoms
2. Where are symptoms on plants
3. Distribution of sick plants in populations
4. Other: site, agronomic methods



How to prepare a plant disease report: cassava mosaic virus

Steps

- 1 Plant part
- 2 Whole plant
- 3 Populations
- 4 Site details and history



Step 1



Step 1: get in close

1 Symptoms

What parts are affected

Describe symptoms in short, simple words

Observe changes in: shape, colour, growth

Visible signs of insects, fungi or other pests

leaf - spots



stem – woolly growth



stem – pest present



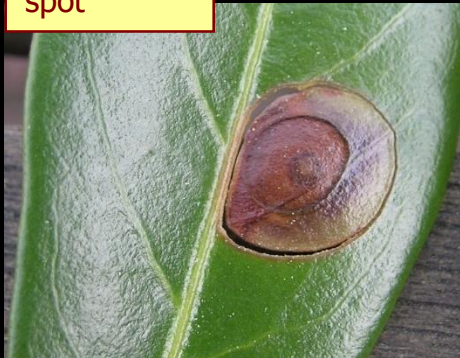
foliage – unusual shape

Types of foliar symptoms

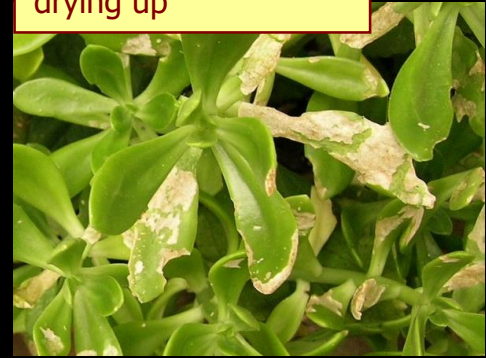
pustules



spot



drying up



blight



black powder



powdery spots



white marks



mosaic



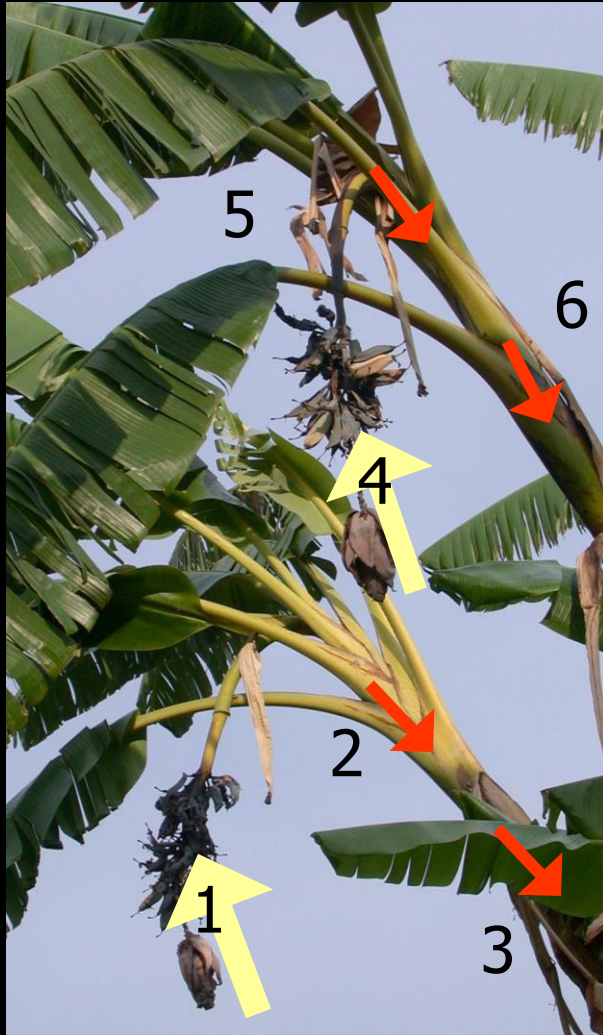
spots



Step 2



Step 2: Look at the whole plant



Bacterial wilt enters through the flowers

2 Whole plant

Symptoms are above or below, on one or all sides

Growth stages affected

How symptoms progress

Severity of attack



Fusarium wilt enters through the soil

Distribution of symptoms in the plant

Whole tree



Left side



Whole plant



Older leaves most affected



Only fruits



Sectors of the crown

Step 3



Step 3: Examine groups of plants

3 Populations

Incidence – how many plants are affected

Distribution:

- random
- edge of the plot
- al azar

Remember: plant variety,
age, how it is grown



Step 3: look for good viewpoints



Cars, buses, trucks



Buildings, other equipment



Trees



Vantage points for panoramic views

Step 4



Step 4: Speak to farmers and extension

4 Site details and history

- When did problem appear; is this the first time
- Local name for the problem
- Soil type, climate (patterns)
- Change in varieties used etc.



Fisherman: citrus



Pak Imis: rice



Haroldo: café

Report on a disease: Phytophthora in avocado

Steps

- 1 Plant part
- 2 Whole plant
- 3 Populations
- 4 Site details and history

