



**AVRDC**

**The World Vegetable Center**



**35<sup>th</sup> International Vegetable Training Course “Vegetables: From Seed to Table and Beyond” Module 1**

# **Development Action Planning**

## **(DAP)**

**Yu-Heng Lin**

Taichung District Agricultural Research and Extension Station

TEL: +886-4-8531970

E-mail: [linyh@tdais.gov.tw](mailto:linyh@tdais.gov.tw)

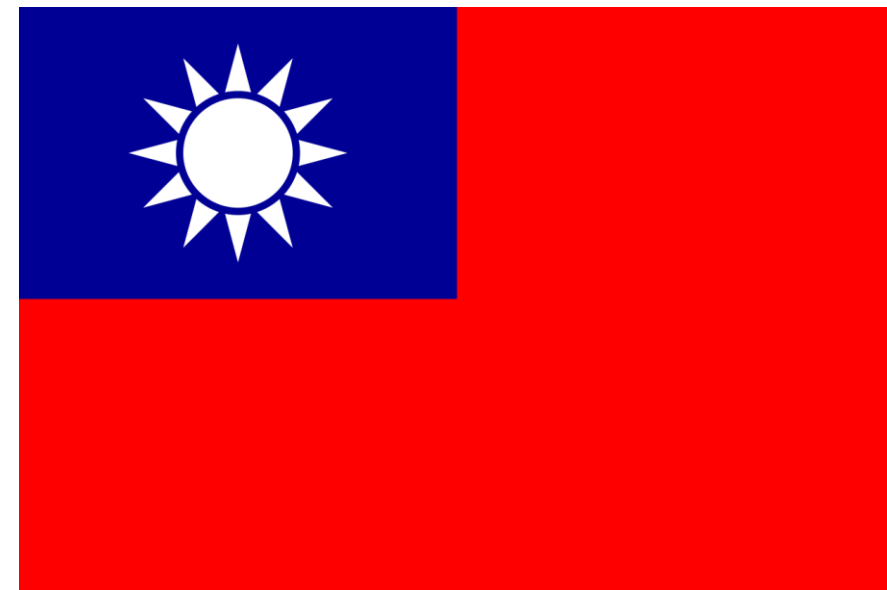


2016.09.30



**AVRDC**

**The World Vegetable Center**





**AVRDC**

**The World Vegetable Center**



行政院農業委員會台中區農業改良場

Taichung District Agricultural Research and Extension Station  
Council Of Agriculture, Executive Yuan





**AVRDC**

**The World Vegetable Center**





**AVRDC**

**The World Vegetable Center**





**AVRDC**

**The World Vegetable Center**



# Yu – Heng Lin

## Education

- M.S. Dept. Horticulture and Landscape Architecture, National Taiwan University, 2011
- B.S. Dept. Horticulture , National Chung Hsing University, 2009



## Taichung District Agricultural Research and Extension Station (TDRIS)

- Our station consists of the main station at Chunghua County and one branch station located at Nantou County .
- 3 research units – Crop improvement, Crop environment and Extension section
- 60 researchers in which 7 senior researchers, 14 associated researchers, 36 assistant researchers, and 3 specialists.

## My research

- Tomato breeding for heat tolerance and TYLCD resistant, Pumpkin and Chinese cabbage breeding for heat tolerance.
- Develop organic culture technique.





**AVRDC**

**The World Vegetable Center**





**AVRDC**

**The World Vegetable Center**





**AVRDC**

**The World Vegetable Center**





**AVRDC**

**The World Vegetable Center**



Wing bean



Basil



Butterfly pea



Bitter guard



Egg plant



Sesbania



**AVRDC**

**The World Vegetable Center**



行政院農業委員會台中區農業改良場  
Taichung District Agricultural Research and Extension Station  
Council Of Agriculture, Executive Yuan





**AVRDC**

The World Vegetable Center



# Grafting practical





**AVRDC**

**The World Vegetable Center**



# Irrigation



Drip irrigation



Sprinkler irrigation



**AVRDC**

**The World Vegetable Center**



# Intercropping



Corn & Turmeric

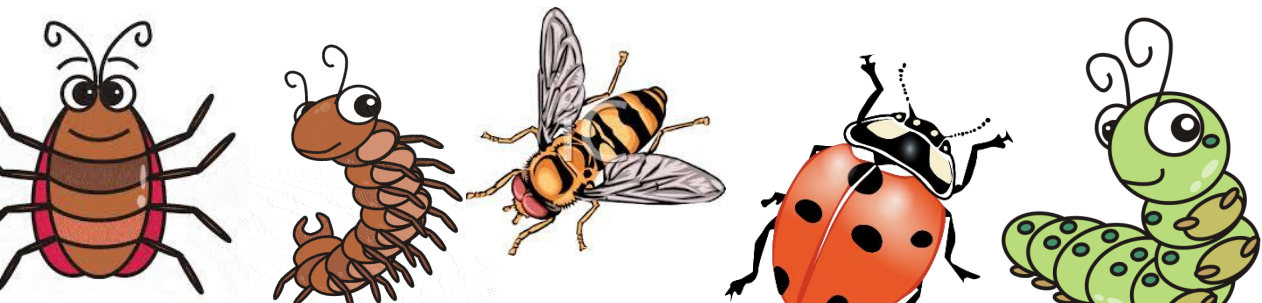


Egg plant & Papaya



**AVRDC**

**The World Vegetable Center**





AVRDC

The World Vegetable Center



# Predator insect



*eocanthecona furcellata* (Wolff))



Green lacewing



AVRDC

The World Vegetable Center



# Parasitoids



Parasitoid wasp



Entomopathogenic fungi



AVRDC

The World Vegetable Center





AVRDC

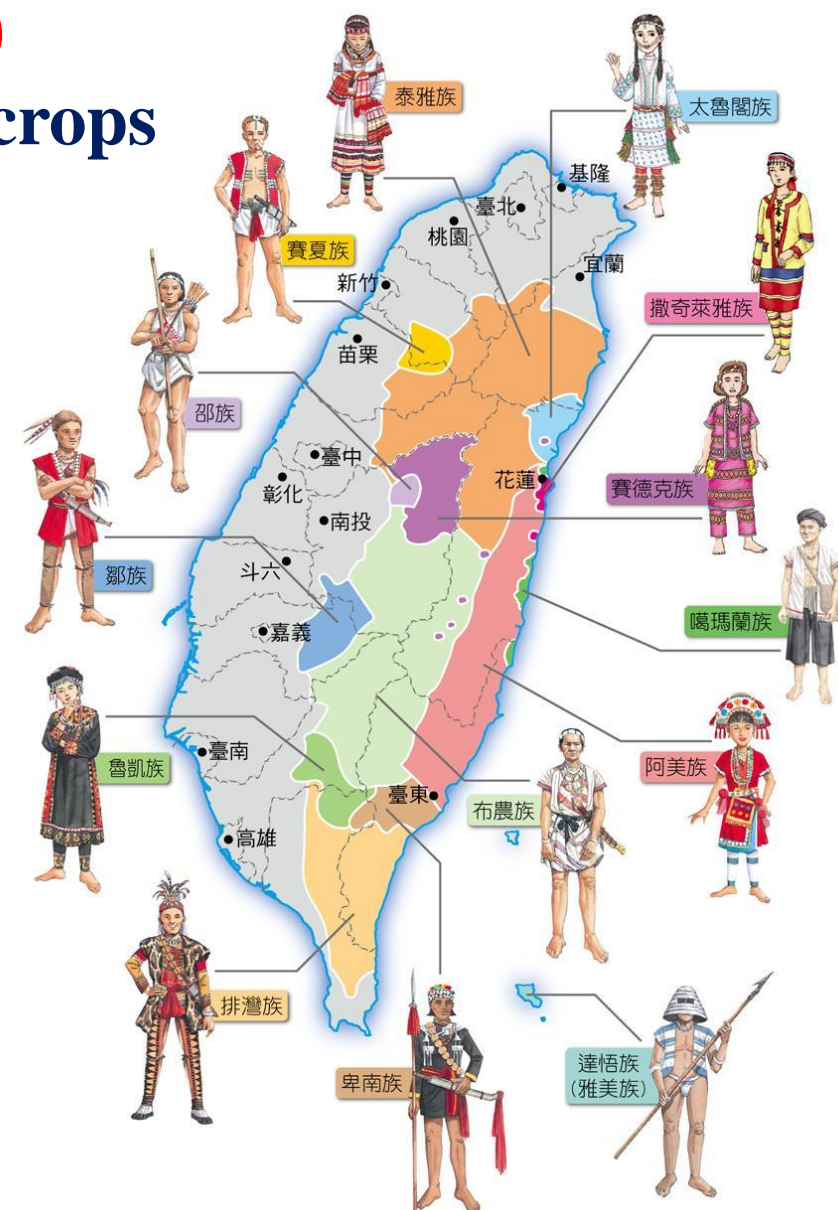
The World Vegetable Center



# Development Action Planning (DAP)

To develop the production of indigenous vegetable crops in aboriginal residential areas in Taiwan

- Taiwan population : 23,000,000 people
- Ethnic group :
  - >95% Han Chinese
  - 2.3% Aborigines
- 16 groups of indigenous people





AVRDC

The World Vegetable Center



## The problem of the vegetable production in aboriginal residential area in Taiwan

- Limited of the cultivated land area
- Remote location
- Aging of agricultural population
- Lack of cultivation technology
- A small range of vegetable species can be selected in summer





**AVRDC**

The World Vegetable Center



# Development Action Planning (DAP)

To develop the production of indigenous vegetable crops  
in aboriginal residential areas in Taiwan

- Who : Aboriginal people
- When: 2017~2018
- Where: Central Taiwan





**AVRDC**

The World Vegetable Center



# How to do

- Survey the indigenous vegetable (from the older family member)
- Analysis the nutrition
- Understand the characteristics and habit
- Establish the production system (IPM & GAP)
- Held the demonstration (extension and promotion)





**AVRDC**

The World Vegetable Center



# Integrated Pest Management (IPM)

- **Crop choose**

- **Physical control**

Covering UV light absorption plastic sheeting

Using yellow sticker paper

Using insect-proof netting

Covering the soil surface with silver plastic cloth

- **Chemical control**

Applying insecticides

- **Biological control**

Intermediate host control

Attractant or repellent crop use

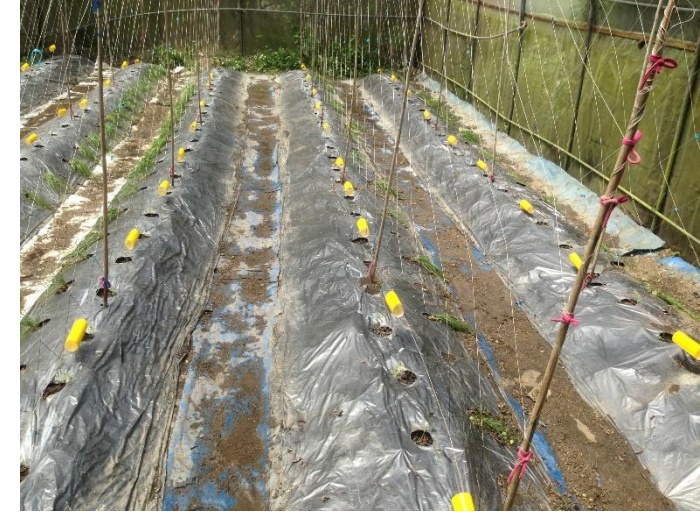
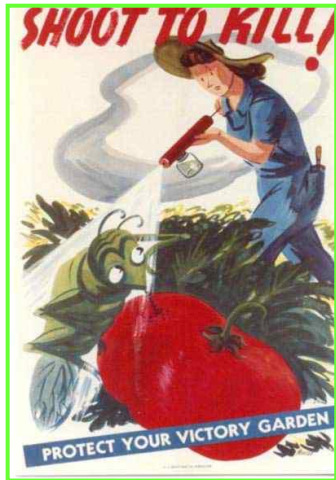
Biological predators & parasitoids

- **Crop management**

Using disease-free seedling

Implementing a insect-host-free period

Crop rotation & intercropping





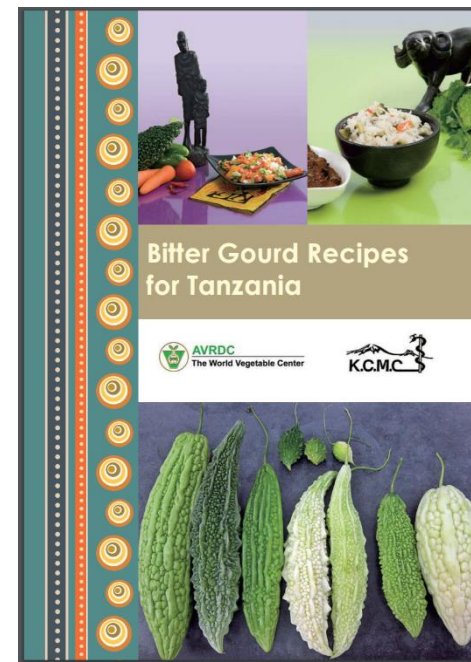
**AVRDC**

The World Vegetable Center



# The implant of the challenge

- Find high economic indigenous vegetables
- Educate the customer
- Create the sell channel





**AVRDC**

The World Vegetable Center



## Expect effect

- To enhance the land use efficiency in tribe
- To establish the GAP & IPM of indigenous vegetables in tribe
- To build the tribe specific agriculture characteristics
- To create their benefit and improve their life quality





**Thanks for your  
attention~**

**SAWADIKA~**